

Report Date: December 10, 2007

Case Details:

Cell Line: ES4Skin Clone 2

Passage #: 13

Date Completed: 12/10/2007

Cell Line Gender: male

Investigator: Jessica Antosiewicz-Bourget

Specimen: iPSC on MEF feeder

Date of Sample: 11/28/2007

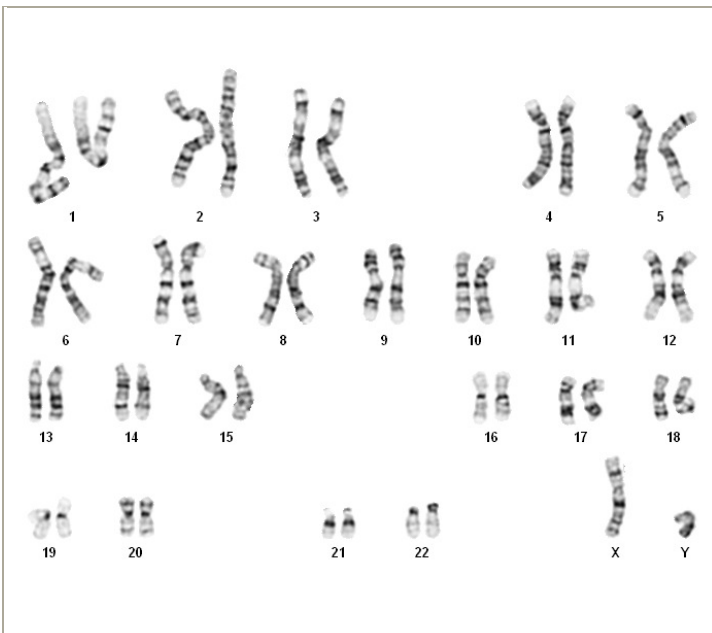
Tests, Reason for: Confirmation of normal karyotype.

Results: 46,XY

Completed by Seth Taapken, CLSp(CG), on 12/10/2007

Reviewed and interpreted by Karen Dyer Montgomery, PhD, FACMG, on 12/10/2007

Interpretation: No abnormalities were detected at the stated band level of resolution.



Cell: S01-03

Slide: B

Slide Type: Karyotyping

Cell Results: Karyotype: 46,XY

of Cells Counted: 20

of Cells Karyotyped: 4

of Cells Analyzed: 8

Band Level: 450-525

Results Transmitted by Fax / Email / Post
Sent By: _____

Date: _____
Sent To: _____