

Report Date: December 12, 2007

Case Details:

Cell Line: ESIMR90 Clone 1

Passage #: 26/24/22

Date Completed: 12/12/2007

Cell Line Gender: female

Investigator: Jessica Antosiewicz-Bourget

Specimen: iPSC on MEF feeder

Date of Sample: 11/30/2007

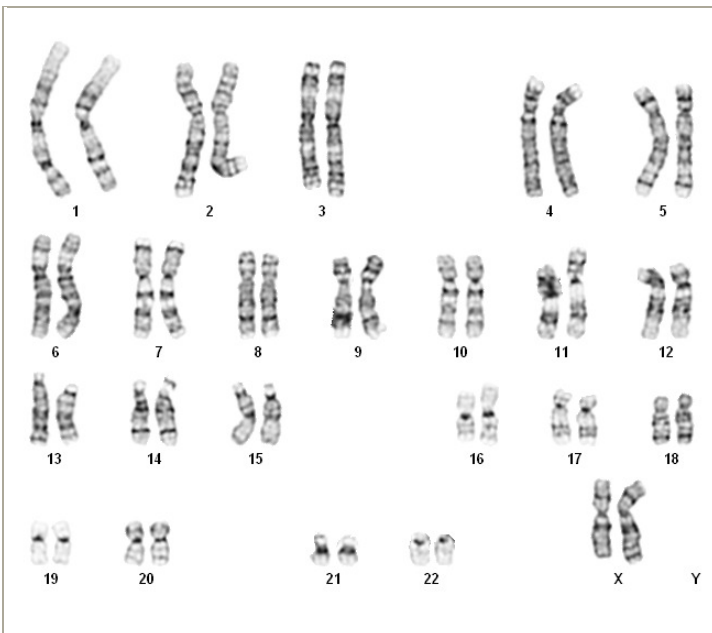
Tests, Reason for: Assess karyotype

Results: 46,XX

Completed by Seth Taapken, CLSp(CG), on 12/11/2007

Reviewed and interpreted by Karen Dyer Montgomery, PhD, FACMG, on 12/12/2007

Interpretation: No abnormalities were detected at the stated band level of resolution.



Cell: S01-01

Slide: A

Slide Type: Karyotyping

Cell Results: Karyotype: 46,XX

of Cells Counted: 20

of Cells Karyotyped: 4

of Cells Analyzed: 8

Band Level: 450-550

Results Transmitted by Fax / Email / Post
Sent By: _____

Date: _____
Sent To: _____