

Report Date: December 18, 2007

Case Details:

Cell Line: ESIMR90 Clone 2

Passage #: 26,24,22

Date Completed: 12/18/2007

Cell Line Gender: female

Investigator: Jessica Antosiewicz-Bourget

Specimen: iPSC on MEF feeder

Date of Sample: 12/14/2007

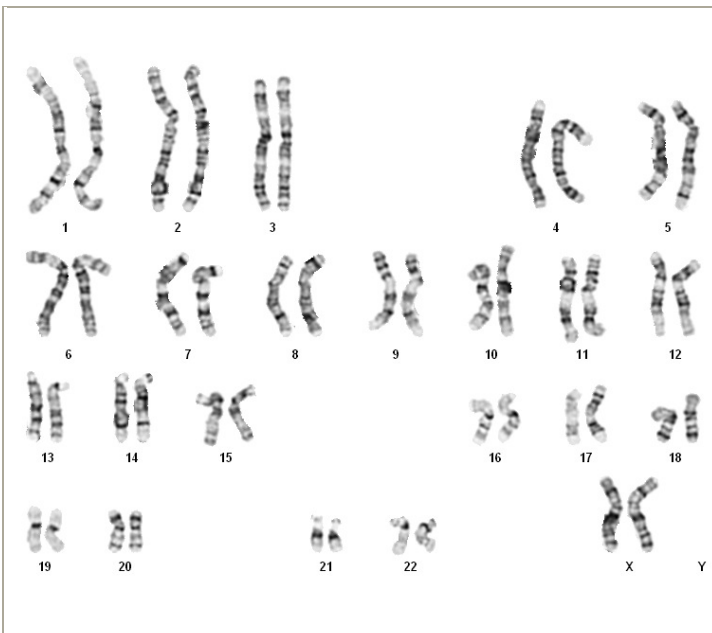
Tests, Reason for: Confirm normal karyotype

Results: 46,XX

Completed by Seth Taapken, CLSp(CG), on 12/18/2007

Reviewed and interpreted by Karen Dyer Montgomery, PhD, FACMG, on 12/18/2007

Interpretation: No abnormalities were detected at the stated band level of resolution.



Cell: S01-04

Slide: B

Slide Type: Karyotyping

Cell Results: Karyotype: 46,XX

of Cells Counted: 20

of Cells Karyotyped: 4

of Cells Analyzed: 8

Band Level: 450-525

Results Transmitted by Fax / Email / Post
Sent By: _____

Date: _____
Sent To: _____