

**Report Date:** December 18, 2007

**Case Details:**

**Cell Line:** ESIMR90 Clone 4

**Passage #:** 26,24,22

**Date Completed:** 12/18/2007

**Cell Line Gender:** female

**Investigator:** Jessica Antosiewicz-Bourget

**Specimen:** iPSC on MEF feeder

**Date of Sample:** 12/14/2007

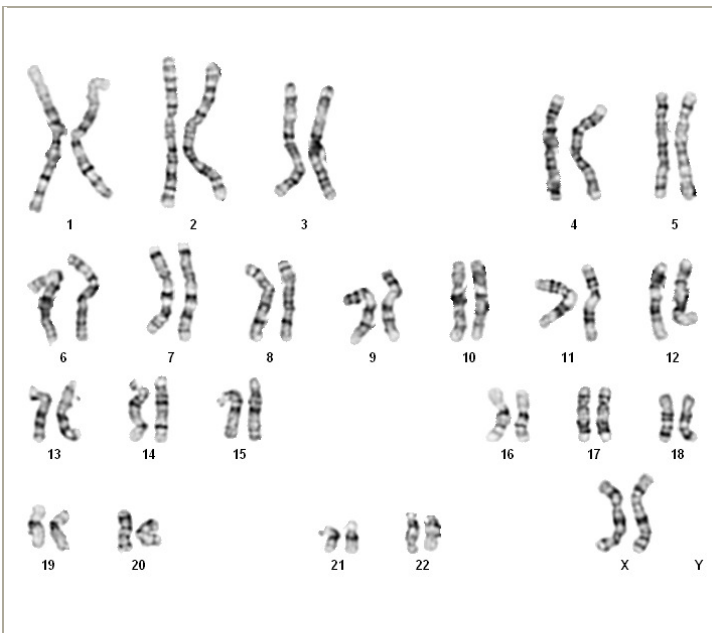
**Tests,Reason for:** Confirm normal karyotype

**Results:** 46,XX

Completed by Casey Stankewicz, CLSp(CG), on 12/18/2007

Reviewed and interpreted by Karen Dyer Montgomery, PhD, FACMG, on 12/18/2007

**Interpretation:** No abnormalities were detected at the stated band level of resolution.



**Cell:** S01-02

**Slide:** A

**Slide Type:** Karyotyping

**Cell Results:** Karyotype: 46,XX

**# of Cells Counted:** 20

**# of Cells Karyotyped:** 4

**# of Cells Analyzed:** 8

**Band Level:**450-525

**Results Transmitted by Fax / Email / Post**  
**Sent By:** \_\_\_\_\_

**Date:** \_\_\_\_\_  
**Sent To:** \_\_\_\_\_